

# platform

CREATIVE LIFESTYLE

Rs 100  
Sept - Oct 2008



## THE DESIGN ISSUE

Sandeep & Tania Khosla

Sumant Jayakrishnan

Thukral & Tagra

Manish Arora

Siddhartha Das

Shreya Jain

Martand Khosla

Mukul Goyal

Play Clan

## ALSO FEATURING

Santosh Sivan

A.R. Rahman

Farhan Akhtar

## PLUS

It's Raining Shoes for Koel Purie

Ramchand Pakistani's Mehreen Jabbar

Amrish Kumar + Amit GT + Melanie Abrams

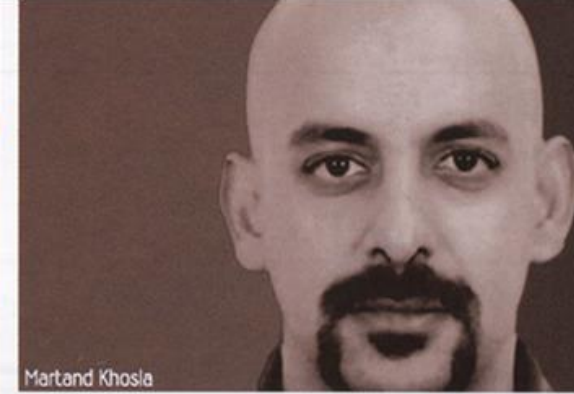
# Martand Khosla



The quintessential modern-day architect — Martand Khosla makes a subtle, yet bold statement with his cutting-edge design sensibility! A graduate of *The Architecture Association* in the UK, his designs, conjured out of his imagination, serve as intelligent and practical means to an end.



The Castro Café, Jamia Millia Islamia University, New Delhi



Martand Khosla



Swarovski & Nikhil Showroom, The Crescent, New Delhi

## DESIGN STYLE

We are solution generators not stylistic architects. We solve problems through design rather than display style in our buildings. When embarking on a new design, it is extremely important to be completely stylistically free and not tied to formal historical preconceptions. Designing for factors that are other than aesthetic, is a key solution generator to our existing social and spatial scenarios.

## CLIENTELE

We are selective about the work we take on. The simple criterion for this is our personal search for the relevant challenges that confront us in these rapidly changing times. We are not averse to any type of project — be it low cost housing or high-end corporate buildings. What matters to us, is the willingness of our client to closely engage with us in the design process and hence the search for solutions.

## THE CASTRO CAFÉ: A SPACE FOR ALL SEASONS...

Built to embrace the extreme temperatures of the Delhi climate, the semi open-air café is well ventilated — cool and shady in summer and sunny in winter. We blurred the boundaries between inside and outside, where they act as a negotiator between the user and the climate. The elements of the building — its roof, floor and walls, are distinctly defined and independent

of each other in form and material. While the building structure is made of steel, the surfaces used materials low in cost and with high endurance, rendering the building easily maintainable and less prone to weathering and vandalism.

## THE SWAROVSKI POD: A SERIES OF CONTINUOUS SURFACES...

A retail space created for the crystal makers, Swarovski, originated through a competition we participated in, where we designed to reinterpret the 'silk route' in the contemporary context of the communication era. The pods were replicable, and were designed as units that could grow and shrink depending on the need and usage of the community. Physically the pod is a series of continuous surfaces that fold to become the wall, the floors, the ceiling, as well as room partitions etc.

## UPCOMING PROJECTS

The future presents us with interesting opportunities. In terms of design, we are looking to address the current global environmental crisis through responsible and environmentally friendly buildings. We are presently working on a couple of corporate buildings, a few houses, two low income housing projects, a small shop interior, a very large SEZ, a hospice for the poor, and a few institutional building projects. The exciting thing about all of these projects is

the high level of diversity in the nature of their design, the type of client and the form that the buildings have taken. I hope that such a range of projects continues to come our way, and perhaps we can look to play a constructive role in the re-aligning of the Indian cities and their built form.

## CONTEMPORARY INDIAN ARCHITECTURE

Currently, the architecture in India is nothing short of dismal. The government, in its complete lack of understanding is bent on forcing archaic ideas of town planning and infrastructure onto a reality that they don't understand. Dreams of a future are built based upon a fantasy derived from picture postcards of European and American cities and fast developing economies of the east — informed purely by physical manifestations of an aspirational lifestyle and an imagined future. Unfortunately this will lead to a precipitous fall.

## CREATIVE VISION

Through a combination of enlightenment, commitment and an introspective professional atmosphere, architecture can change the fabric of our towns and cities — from their present dead carcasses lacking any contemporary Indian reality, into facilitators and providers for a rapidly industrialising India. Good design solutions generate creative appropriateness and an astute understanding of the human scale.