

COLLECTOR'S ISSUE

INDIA
TODAY

HOME

2020 ANNUAL | ₹200



TOP ARCHITECTS

THE BRILLIANT MINDS BEHIND THE COUNTRY'S MOST CREATIVE SPACES

PRESENTED BY

HITACHI

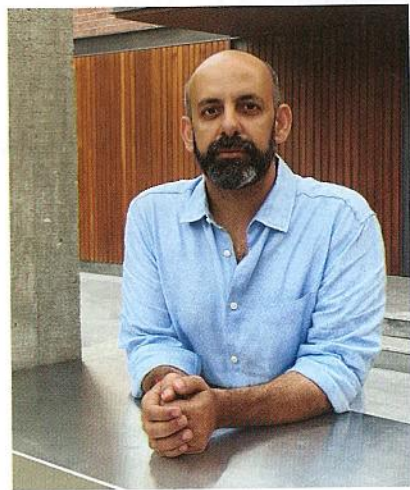
AIR CONDITIONING PARTNER

NIRMALS

everest

REIMAGINE DESIGN |

“We find simple and elegant material and spatial solutions for our clients”



MARTAND KHOSLA
Co-founder
Romi Khosla Design Studio, Delhi
www.rk-ds.com

Martand Khosla grew up surrounded by architecture; his father Romi Khosla's first office was a part of their home. It was natural for Martand to enrol into an architecture school, and after a brief working stint in England, he came back to India in 2001 and set up Romi Khosla Design Studio (RKDS), an architectural and interior design firm that specialises in corporate, institutional, and private residential design. “When we started RKDS, we were looking at opportunities in a newly developing India to search for a contemporary Indian aesthetic that places itself squarely within modernism,” says Martand.

Class Apart

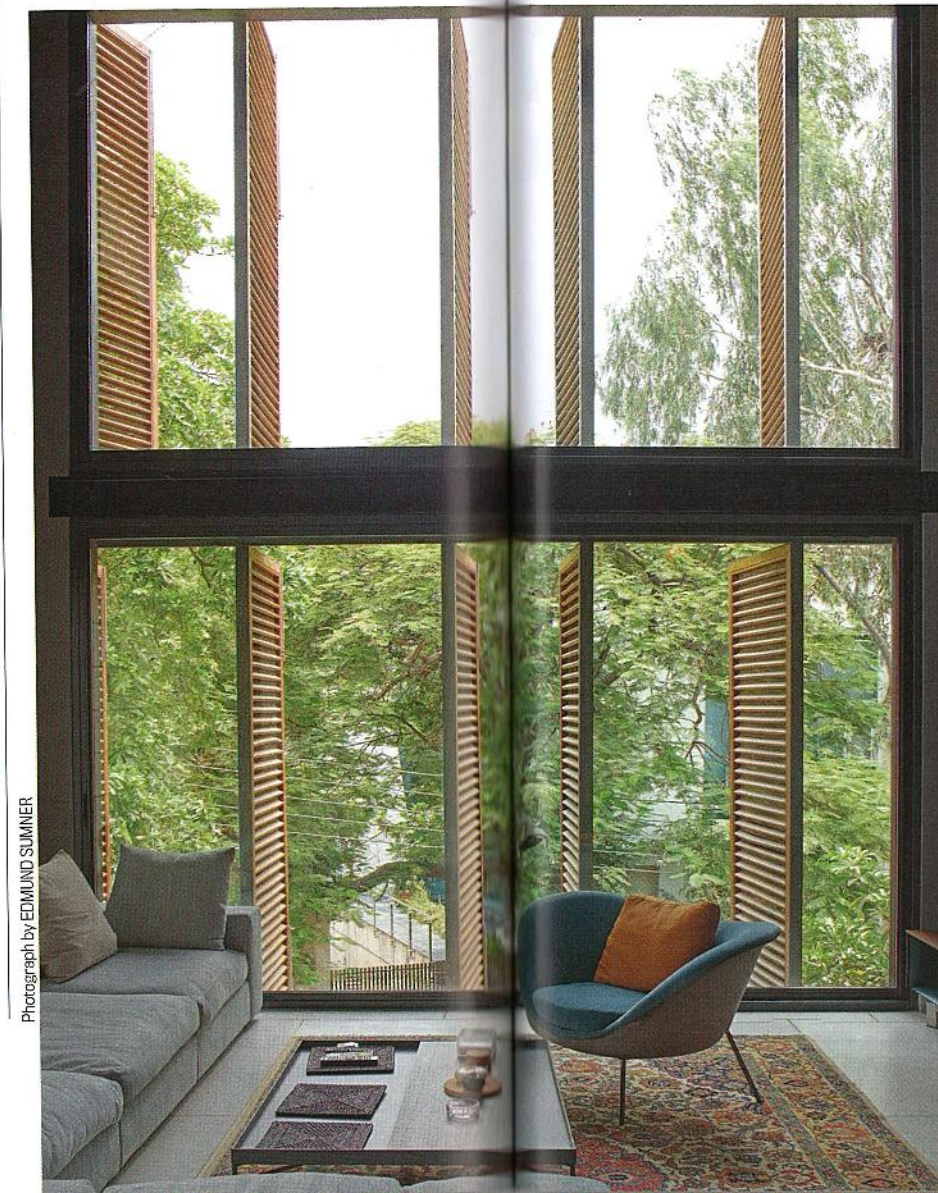
Though his father has been a great learning factor, Martand has also been inspired by international architects such as Le Corbusier, Louis Kahn, Peter Zumthor, Renzo Piano, Charles Correa, Geoffrey Bawa, Felix Candela, and Hassan Fathy. “We design with an architectural philosophy that is materially, culturally and climatically entrenched within South Asia,” he says. Some of RKDS's works include the headquarters for Volvo-Eicher in Gurgaon, buildings for Jamia University including an art gallery, a cafeteria and a dental college, and a few residential projects. At present, they are designing

RAY OF SUNSHINE

The Tower House in Maharani Bagh, Delhi, uses brick, steel and exposed concrete (right)



Photograph by SAURABH PANDEY



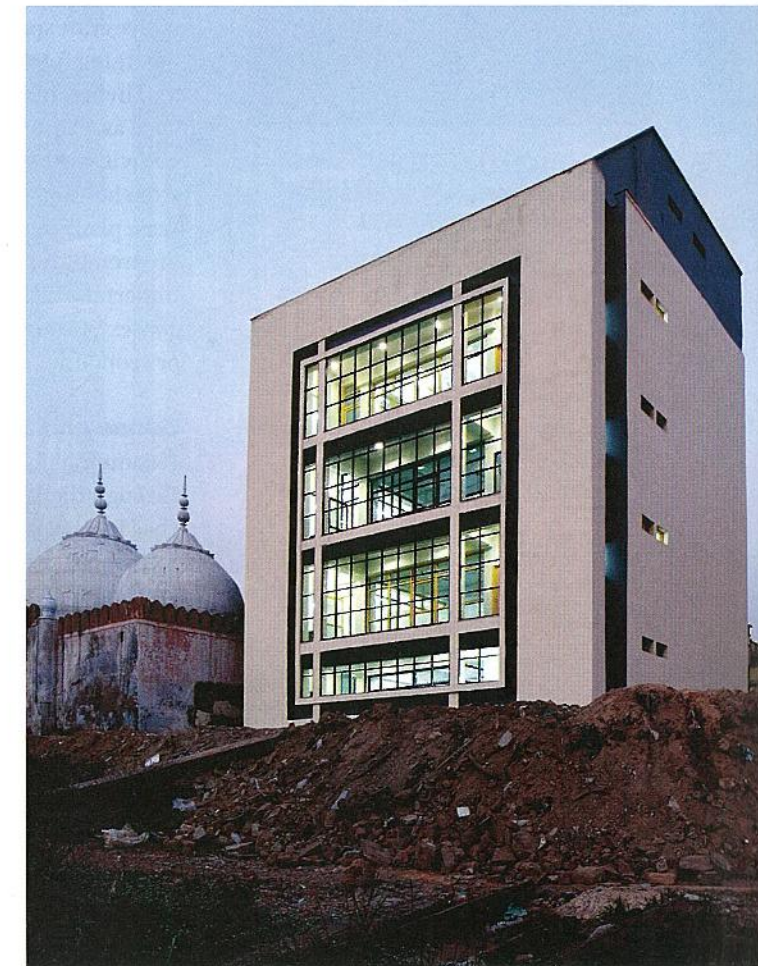
Photograph by EDMUND SUMNER

REAL WORK

The Volvo-Eicher headquarters in Gurgaon has received a LEED platinum rating for sustainable and green design (above)

HEALTH FIRST

A polyclinic for the economically disadvantaged at Lahori Gate in Delhi (right)



two high-end residences in India and are simultaneously working on low-cost waste segregation sheds for cooperative in Pune. “We design for clients across the economic spectrum,” says Martand.

Design Values

He though learnt a lesson of detachment from his projects a long time ago. “We love them dearly while we design them and construct them, but I have learnt to let them go once we have delivered them to the clients.” RKDS is now working on designing an embassy complex in Uzbekistan, a rural community research centre in Maharashtra, besides others. Each of these projects present different challenges, and Martand is excited about all.

— Shelly Anand