

DESIGN TODAY

February 2011 ₹100

SPACES ETCETERA

**BRICK
INSPIRED**
FROM FACTORY
TO HOME
Page 54

IN FOCUS

Ideas in Design Spaces & Materials

COLOUR PLAY, SINGAPORE BOUTIQUE
Muse: The classic game of hide-and-peek

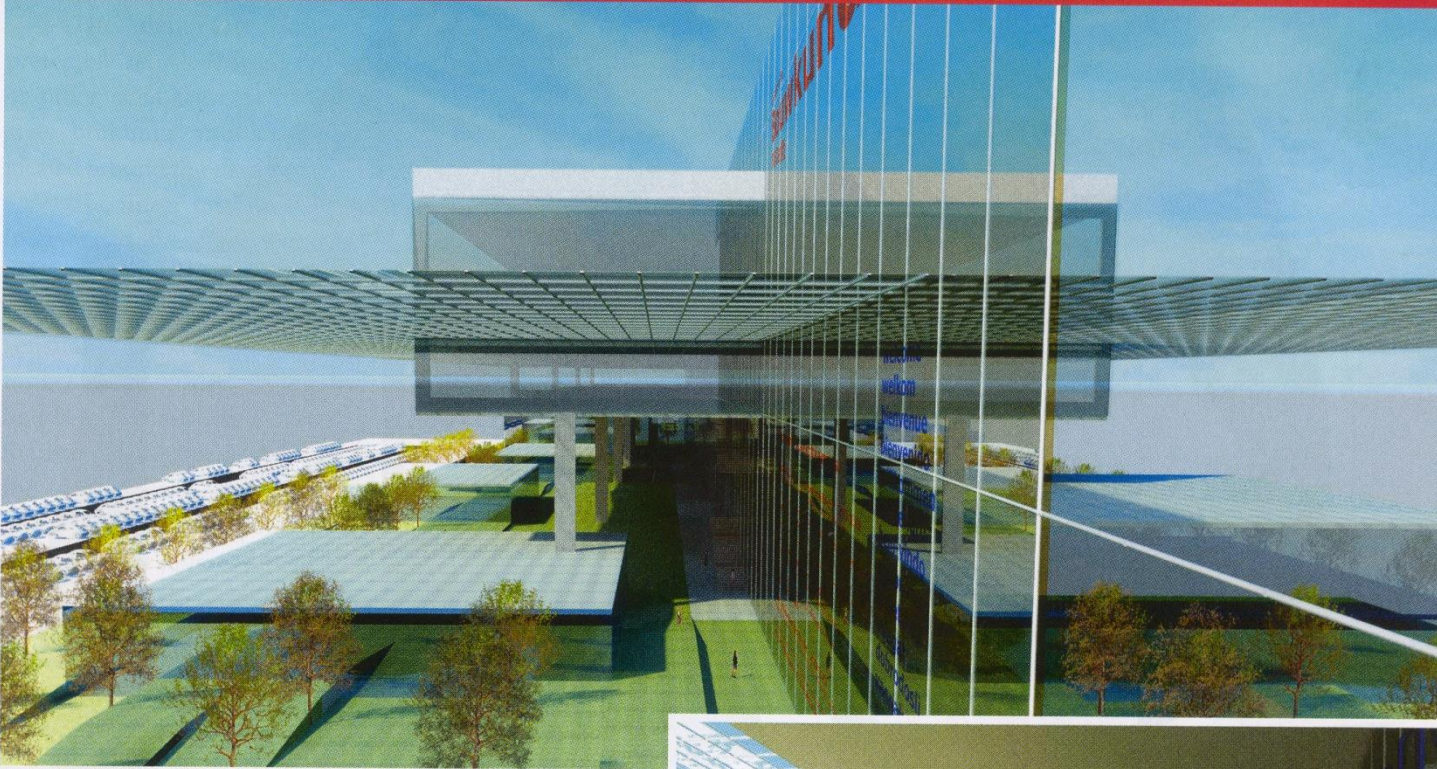
VERTICAL GARDENS
Create green walls in your home

EXPERT SPEAK: THE WAY WE WILL LIVE



TWISTS & TIES

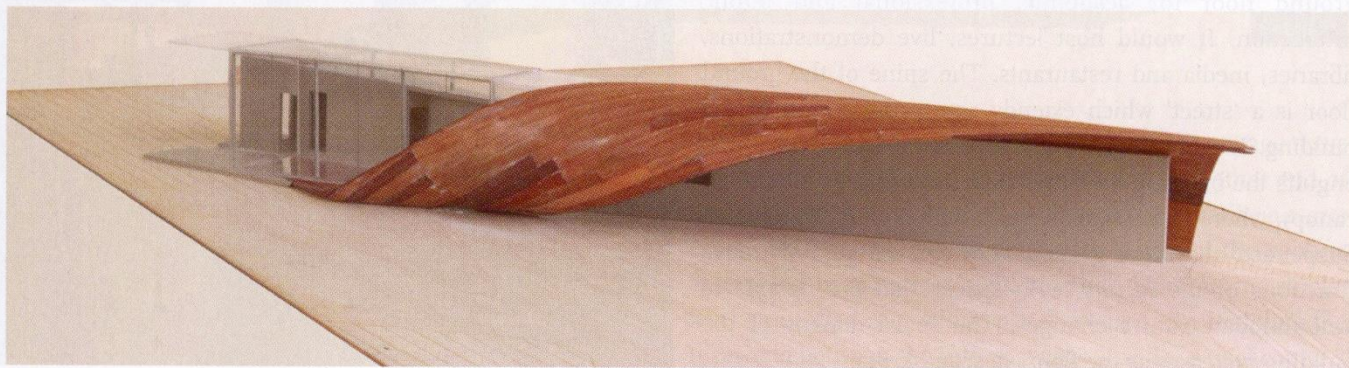
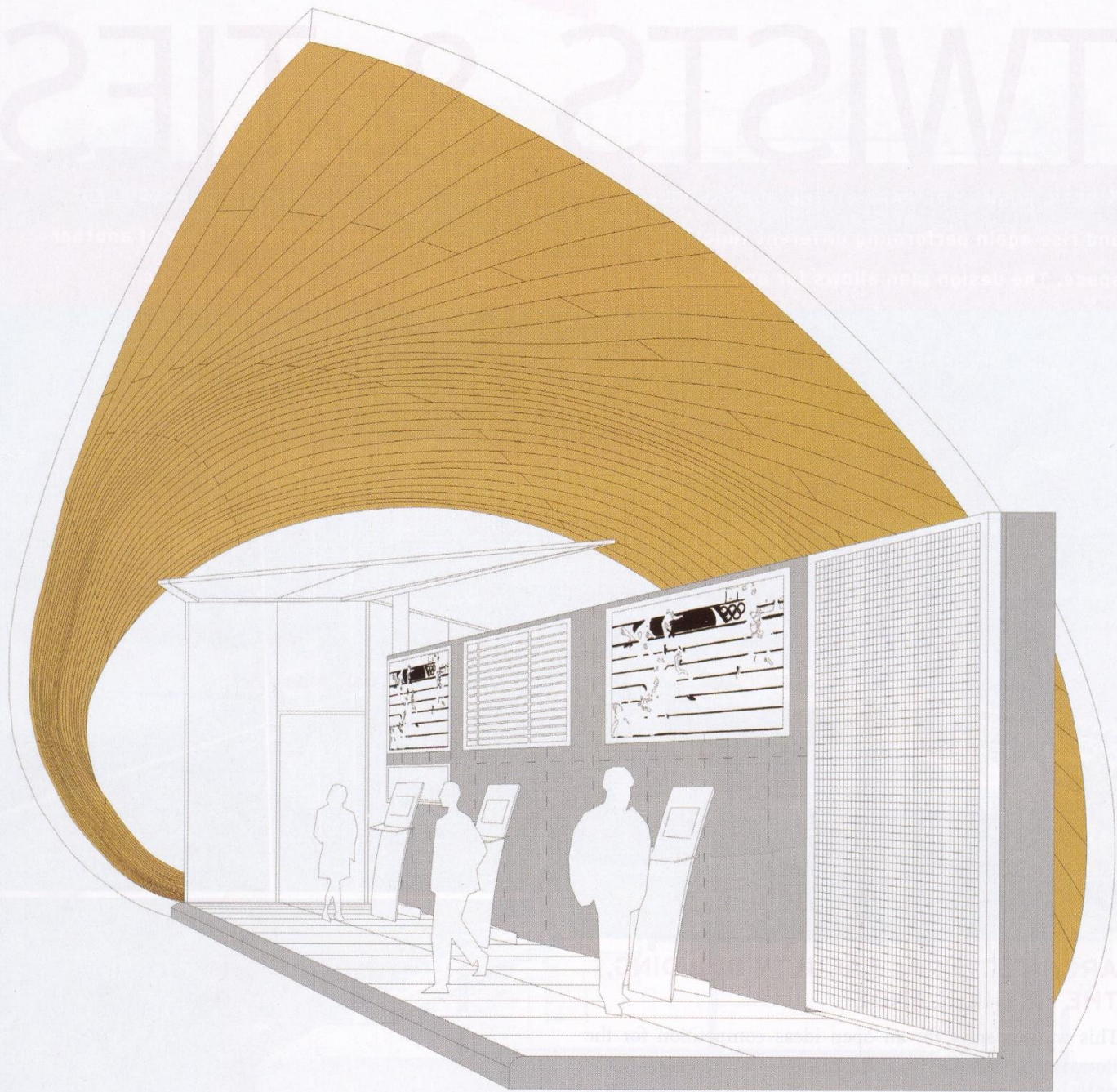
KINETIC FORMS ARE PART OF THE ROMI KHOSLA DESIGN STUDIO REPERTOIRE. CONTINUOUS PLANES BLEND and rise again performing different functions, just as a curled canopy can become the floor of another space. The design plan allows for ample user interaction, making communal areas democratic



ARCHITECTURAL FACULTY BUILDING, THE NETHERLANDS

This was an entry for an open ideas competition for the Bouwkunde building—for the Faculty of Architecture at the Delft University of Technology. The design proposes a ground floor for academic, professional and public interaction. It would host lectures, live demonstrations, libraries, media and restaurants. The spine of the ground floor is a 'street' which extends across the length of the building. It is surrounded by the extended campus which engulfs the building on either side, protected by a building canopy, where pedestrians interact with a glass 'word' wall. Suspended above the ground floor are the administrative functions of the faculty, with spaces that are flexible to accommodate future changes. The social density of the building increases as the floors descend lower.



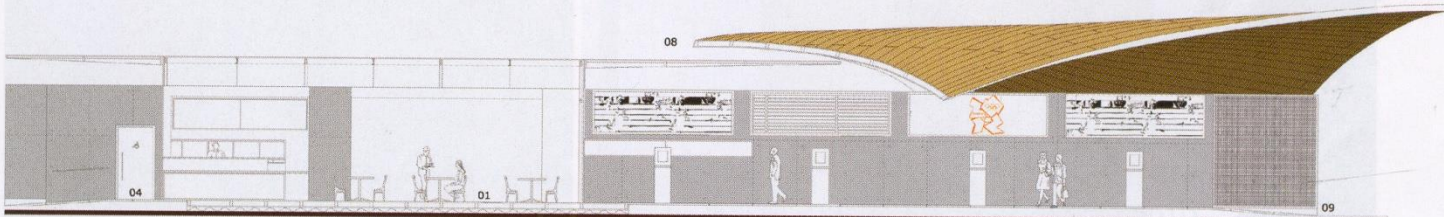
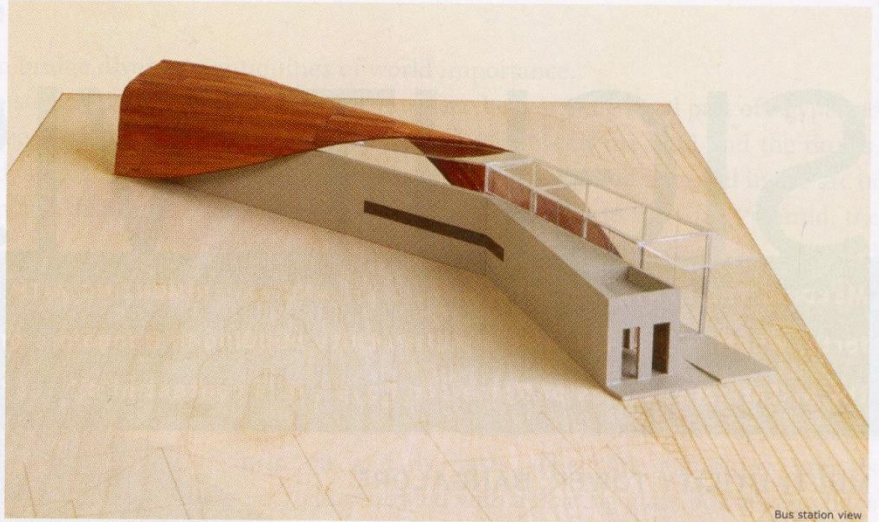


STRATFORD KIOSKS COMPETITION, NEWHAM

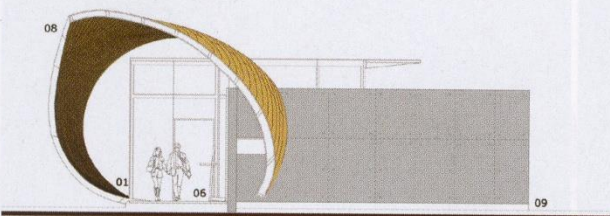
The brief was to design a group of flexible, free-standing kiosks in Meridian Square, Stratford which will serve as key venues for information, services for before, during and after the 2012 London Olympics and Paralympics Games. The design proposal was a linear pavilion cloaked in three materials: a curled wooden canopy, a concrete barrier wall, and a glass enclosed café.

The deliberate use of timber, preferably recycled, from railway sleepers or other such uses, is juxtaposed to the steel buildings and structures that are located around the pavilion.

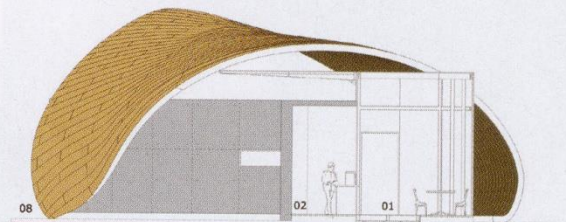
The linear modelling of the pavilion interweaves these three materials into a sculptural form that invites curiosity and welcomes visitors. The flooring reflects the sensual presence of the material. The timber of the curled canopy becomes the flooring of the cafeteria. The concrete of the barrier transforms into the flooring of the information-exhibition space. The linear plan extends 40 metres and defines an edge of the square, serving as a new sign post in this civic space. The functions are planned in a linear sequence from south west to north east .



Section A-A'



Section B-B'



Section C-C'