

THE
PHAIDON
ATLAS
OF 21ST
CENTURY
WORLD
ARCHITECTURE

1,037 Buildings

653 Architects

6 Geographical
Regions

89 Countries

100 Single Houses	100 Schools
100 Museums	100 Universities
100 Art Galleries	100 Hotels
100 Theatres	100 Public Buildings
100 Shopping Parks	Φ
100 Towns	
100 Office Buildings	
100 Hospitals	
100 Industrial Buildings	

Follows the sensational success of Phaidon's first Atlas of Architecture

Full of emerging architects as well as established masters

Global statistics and map data compiled by the London School of Economics

All the greatest buildings of the 21st century

Includes multiple housing developments, social housing and single houses, art galleries, artists' studios, arts centres, community centres, concert halls, cultural centres, dance studios, exhibition centres, glasshouses, libraries, memorials, multimedia centres, museums, studios and theatres, agricultural buildings, conference centres, exhibition centres, factories, mixed-use developments, offices, research facilities, restaurants ...

... retail and wineries, research facilities, schools, student housing and universities, embassies, government facilities, law courts, parliament buildings and town halls, cathedrals, cemeteries, chapels, churches, crematoria, pilgrims' hostel, monasteries, mosques, schools, synagogues and temples, airports, boat piers, bus stations, cable cars, port facilities, railway stations, fire stations, hospitals, sports facilities, stadia and swimming pools, hotels, tourist attractions, parks, spas, casinos, clubs, bridges, motorway structures, power stations, pumping stations and waste facilities

£ 100.00 UK
\$ 195.00 US
€ 150.00 EUR
\$ 225.00 CAN
\$ 275.00 AUS

ISBN 978-0-7148-4876-7



9 780714 848767

0084	New Delhi, Delhi, India	Castro Cafeteria - Jamia Millia University	Romi Khosla Design Studios	2007	COM			
0085	New Delhi, Delhi, India	Offices Tata Consultancy Services	Studio Architetto Mario Botta	2002	COM	DRS YOU Austria, Switzerland	DRS HEL Italy, Italy	DRS COM Germany, Italy



0084 Situated in a university campus in New Delhi, this student canteen is part of a larger development plan for the construction of adjacent facilities, including an art centre, international student housing and a student auditorium. At the heart of this new activity, the canteen serves as a social hub for students. The project responds to New Delhi's extreme temperatures with a solution using natural ventilation. The canteen is organized as a linear space whose enclosing elements fall away, challenging the relationship between interior and exterior.

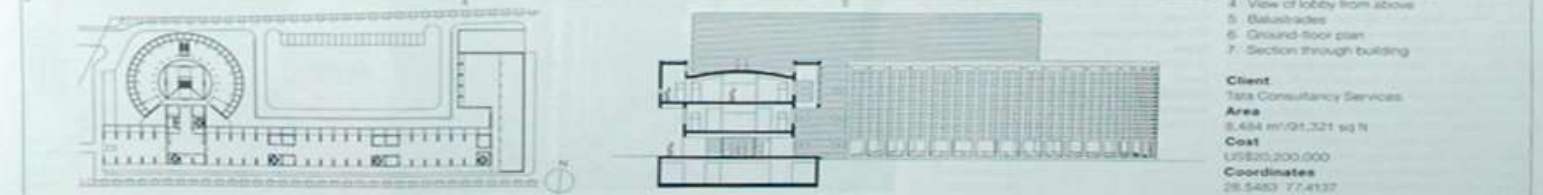
Running along the edge of a newly landscaped site, the project covers a narrow rectangular band of 800 m² (8,573 sq ft). At one end of this band, a fully enclosed kitchen of 71 m² (764 sq ft) anchors the project. From here, independent wall and ceiling elements project into space to define the dining area. At each of these elements – first one wall then the roof and finally the second wall – comes to an end, the dining table protrudes into an outdoor seating area. Two continuous black strips run the length of this junction and serve as tables. At times, the ribbon-

like strip folds upwards or down along the floor to allow passage. Individual concrete elements finished with wood tops serve as benches alongside the table. Different materials reinforce the separate identities of the design elements. Floors are in locally available, grey Kota stone. The steel framework of the floating roof is supported by six steel columns and covered in galvanized iron sheets. Ceilings are finished in perforated aluminum sheet with lighting concealed within the soffit. The walls enclosing the space are made from built-up

stacks of discarded marble off-cuts. The uneven edges of the off-cuts give the walls a rough texture that contrasts with the smoothness of the black granite used to cover the continuous tabletop.

- 1 View from northwest
- 2 Detail of long wall to south
- 3 Outdoor seating area
- 4 Seating area with aluminum roof
- 5 Interior seating area
- 6 Section through building
- 7 Site plan

Client
Jamia Millia Islamia University
Area
800 m²/9,580 sq ft
Cost
US\$95,000
Coordinates
28.5589 77.2536



0085 These new offices for Tata Consultancy Services sit in an industrial and commercial development zone, 30 km (18.6 miles) southeast of New Delhi. The offices are arranged within two contrasting three-story volumes linked by a taller third element. A rectangular block, 150 m (492 ft) long, is set at a right angle to the embankment. It houses two floors of offices for computer-programming staff and has an open promenade running its full length at ground level. Connected to it on the north side is a 45 m (147 ft) diameter cylinder accommodating administrative staff offices and educational facilities. Entrance to both parts of the building is from the west end of the open promenade. An entrance lobby leads off the promenade into the circular building. Here, the resolution of orthogonal and circular geometry produces a cube within the cylinder. The cube is an atrium surrounded by 14 offices arranged at the perimeter of each floor. Where the floor meets the atrium, its edges are turned up to form solid balustrades. The geometric play is extended in the bold black and white stripes of the polished stone floor with a grand staircase at its centre. The consistent appearance of the building is achieved by facing all the external surfaces of the reinforced concrete structure with split red Agis stone. This same stone veneer is applied to the continuous bands of bronze-tinted set 5 m (16.4 ft) away from the glazed office walls.

- 1 View looking west along north facade
- 2 View of south facade
- 3 Glazed and shaded opening
- 4 View of lobby from above
- 5 Balustrades
- 6 Ground-floor plan
- 7 Section through building

Client
Tata Consultancy Services
Area
8,484 m²/91,321 sq ft
Cost
US\$20,200,000
Coordinates
28.5483 77.4137