



RAHUL
MEHROTRA

ARCHITECTURE
IN INDIA

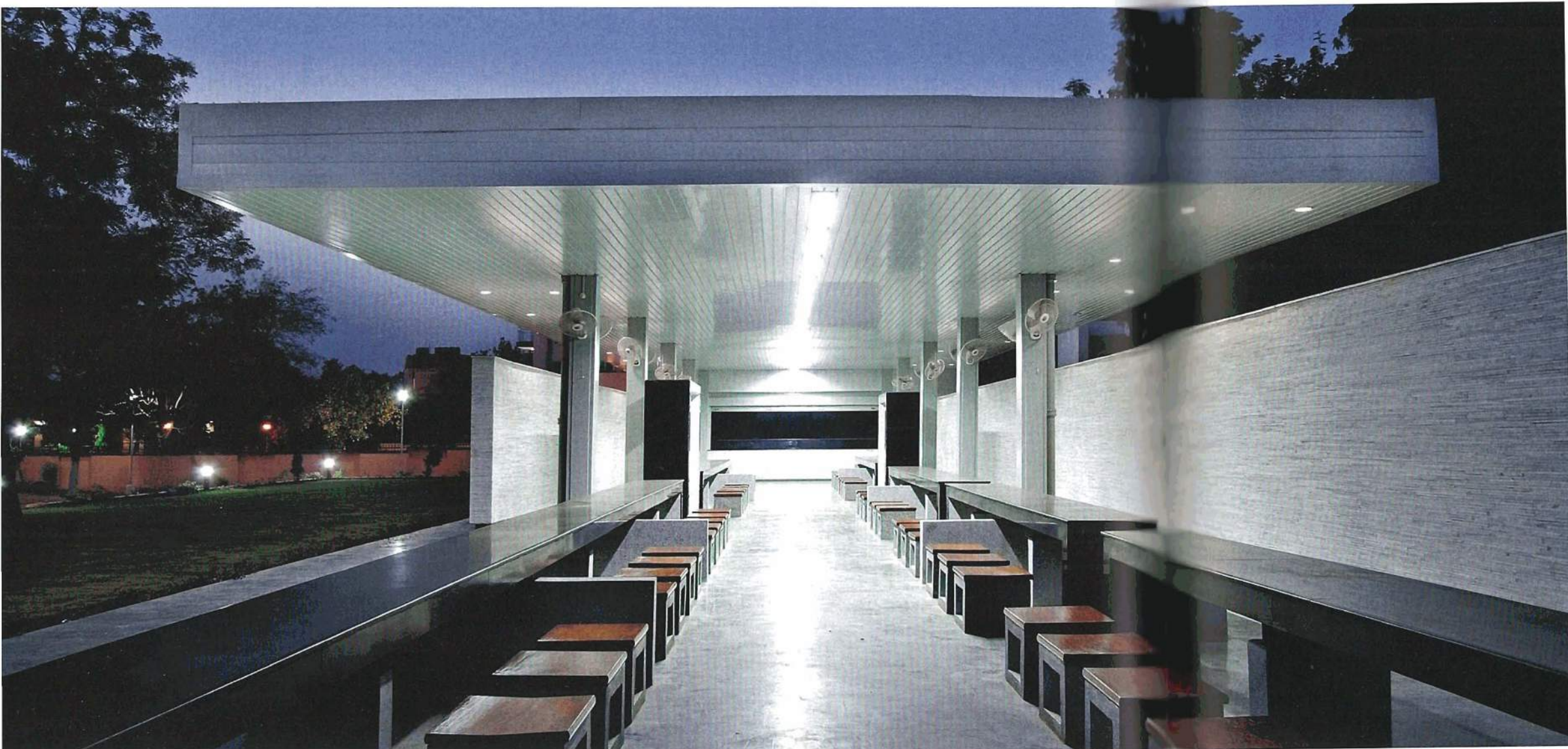
SINCE 1990

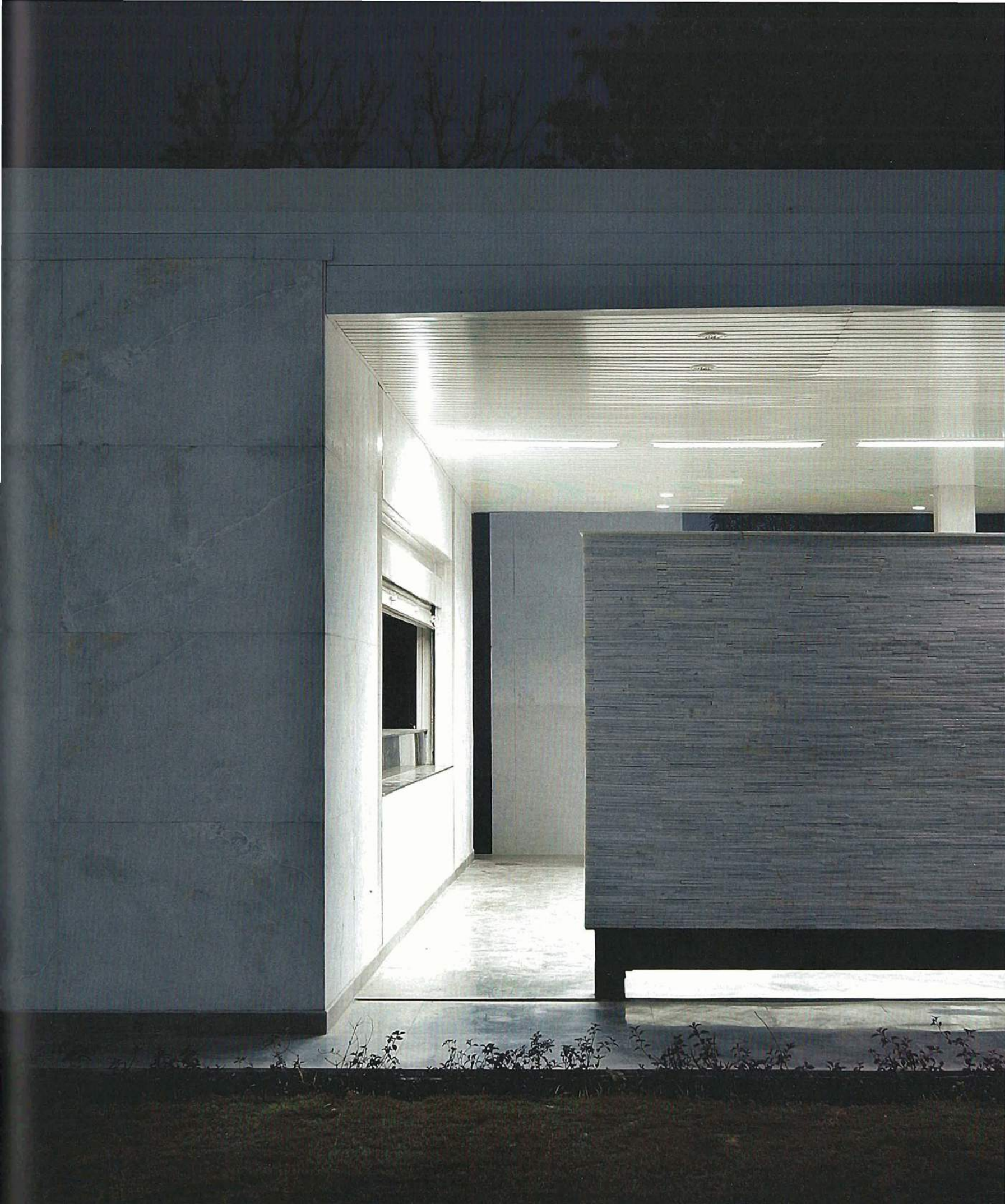
PICTOR



Seating area looking towards service block Guided by the structural supports, the linear furniture arrangement along the periphery allows for a clear movement path and ensures the alignment of seating in what is usually a chaotic student space

Side wall and edge condition
The dining area explores varying degrees of enclosure that allow multiplicity of use while segregating the service areas from the main space





folio 9

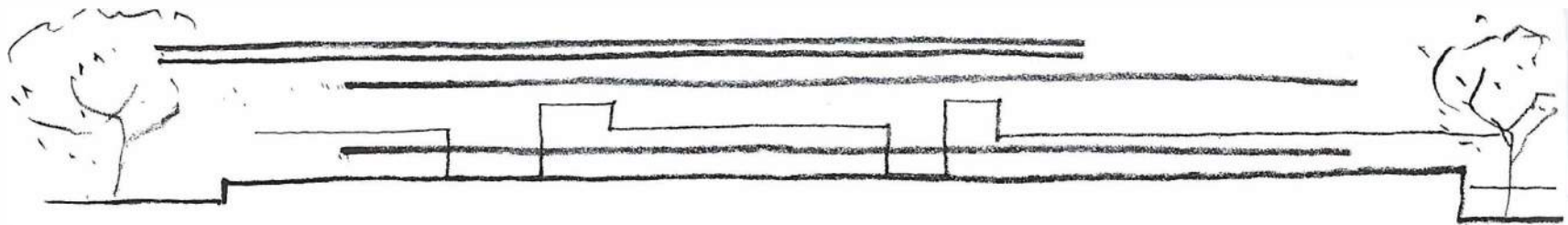
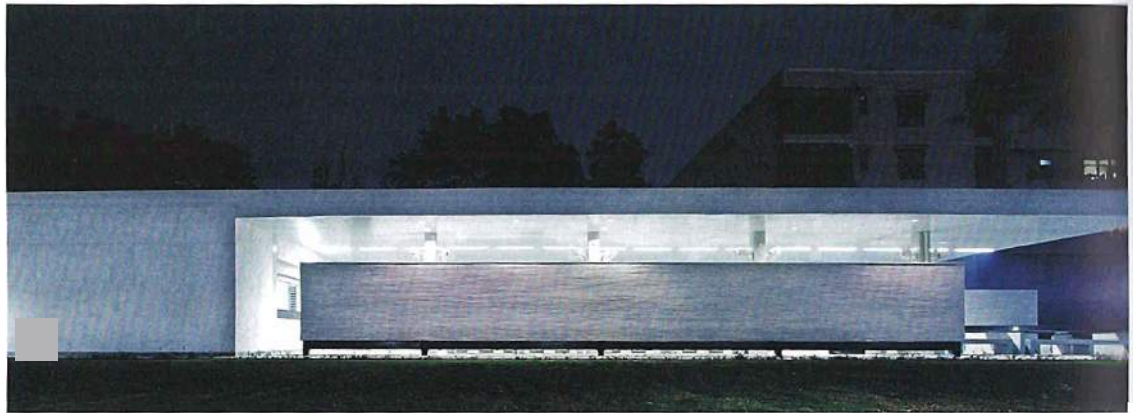
CASTRO CAFETERIA, New Delhi

Romi Khosla Design Studio

The Castro Cafeteria at the Jamia Millia Islamia University exerts a new and powerful presence on the landscape of the campus. The cafeteria essentially comprises a kitchen block and a long eating area, and attempts to challenge and alter the conventional notions of a campus canteen as an enclosed space. In this way, it also seeks to address the extreme climatic conditions of the region by providing a partially open-air environment, allowing ambient year-round temperatures without compromising on ventilation. With spatial elements delineated as distinct and independent from each other, the kota stone floor becomes the primary unifier that seamlessly blurs the boundaries between the interior and the exterior. The transition from enclosed to open occurs from a semi-covered space, defined by parallel marble walls

and a floating galvanised iron roof supported on steel columns, to an open space demarcated only by the floor and fixed seating. The structure appropriates standardised building technologies (used commonly for petrol pumps or gas stations), making this a

significant project in the context of a contemporary India. The use of creative innovations opens up novel ways in which the construction industry can contribute to evolving suitable building typologies for the new Indian landscape.



Translation of the design concept The side walls are detached from the floor and roof, allowing each horizontal and vertical element to be read as an individual entity enclosing the space

Conceptual sketch The cafeteria was designed as a floating pavilion that emphasises the horizontal plane, allowing the surrounding landscape to visually penetrate its enclosure

Detail of the façade Plastered surfaces and a stone-clad wall are placed adjacent to each other, subtly playing off different textures

Jamia Millia Islamic University Gallery (*left, top and bottom*) by Romi Khosla Design Studio. This gallery space utilises the traditional concept of light-filtering screens in a contemporary way

through material exploration. Projects like these bring a fresh perspective by successfully straddling the global and the local without being overtly conscious of either

Jewel Tech (*centre, top and bottom*), an early project by Serie Architects for a jewellery manufacturer, demonstrated the possibilities of using digital and computational techniques to generate new spatial models

Blue Frog (*right, top and bottom*) by Serie Architects combines software-generated design with local fabrication skills to generate new forms that reinterpret the usual spatial configurations for commercial activity

